

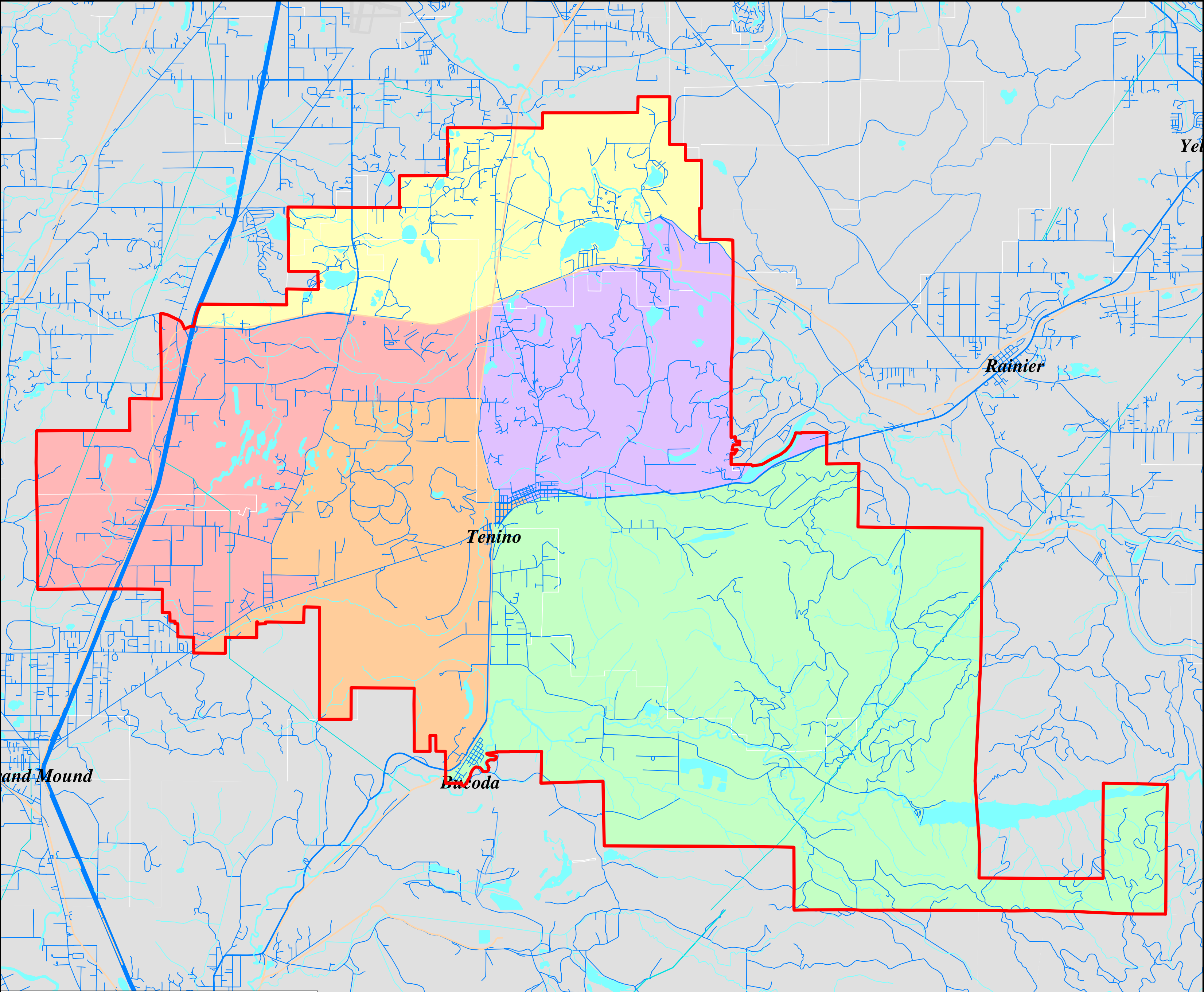
Tenino School District

Proposed Board of Director Districts based on Census 2010 Geography

Proposed Board Districts as Approximated Using Census 2010 Geography

- 1st District
- 2nd District
- 3rd District
- 4th District
- 5th District

District Outline



08/19/2011

# ***Tenino School District District Summary Report***

1

Director District Number	Ideal Population	Total Population	Deviation from Ideal	% Deviation from Ideal	White Population	Hispanic Origin (of any race)	Non White & Mixed
1st	1,896	1,847	-49	-2.58	1,702	69	145
2nd	1,896	1,882	-14	-0.74	1,749	74	133
3rd	1,896	1,972	76	4.01	1,787	117	185
4th	1,896	1,845	-51	-2.69	1,715	98	130
5th	1,896	1,933	37	1.95	1,793	98	140
Totals.....		<u>9,479</u>	<u>-1</u>		<u>8,746</u>	<u>456</u>	<u>733</u>

**Tenino School District****Summary of Population by Race and Hispanic Origin**

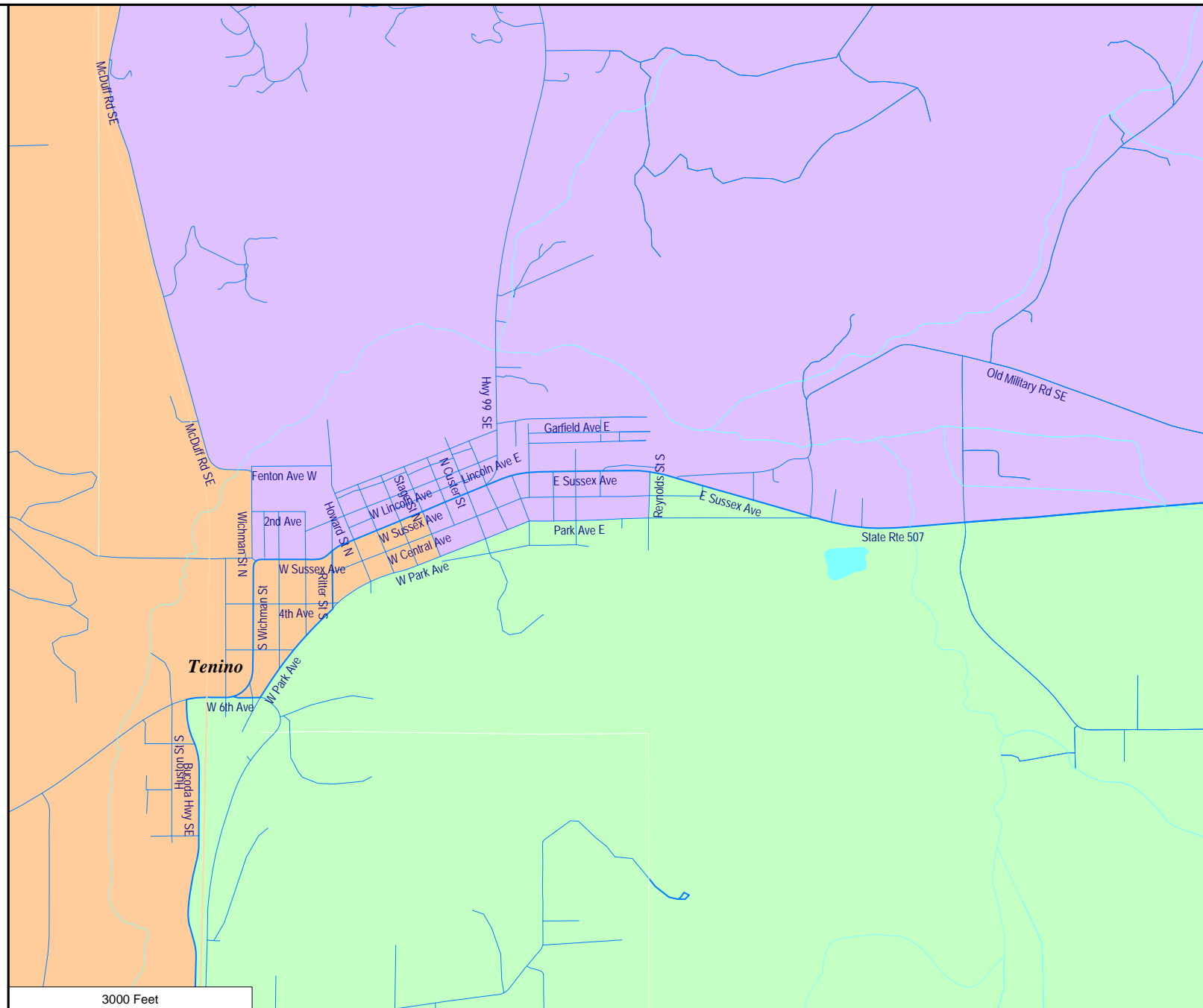
District Number	Total Population	Total Population by Race							Two or More Races	Hispanic Origin (of any race)
		Single Race								
		Total	White	Black African American	American Indian and Alaska Native	Asian	Native Hawaiian and Other Pacific Islander	Other Race	Total	
1st	1,847	1,786	1,702	15	33	18	0	18	61	69
2nd	1,882	1,824	1,749	10	28	13	5	19	58	74
3rd	1,972	1,881	1,787	12	12	18	4	48	91	117
4th	1,845	1,794	1,715	10	12	18	6	33	51	98
5th	1,933	1,866	1,793	11	16	22	0	24	67	98
Totals.....	9,479	9,151	8,746	58	101	89	15	142	328	456

## Proposed Board of Director Districts based on Census 2010 Geography

2nd District

3rd District

4th District





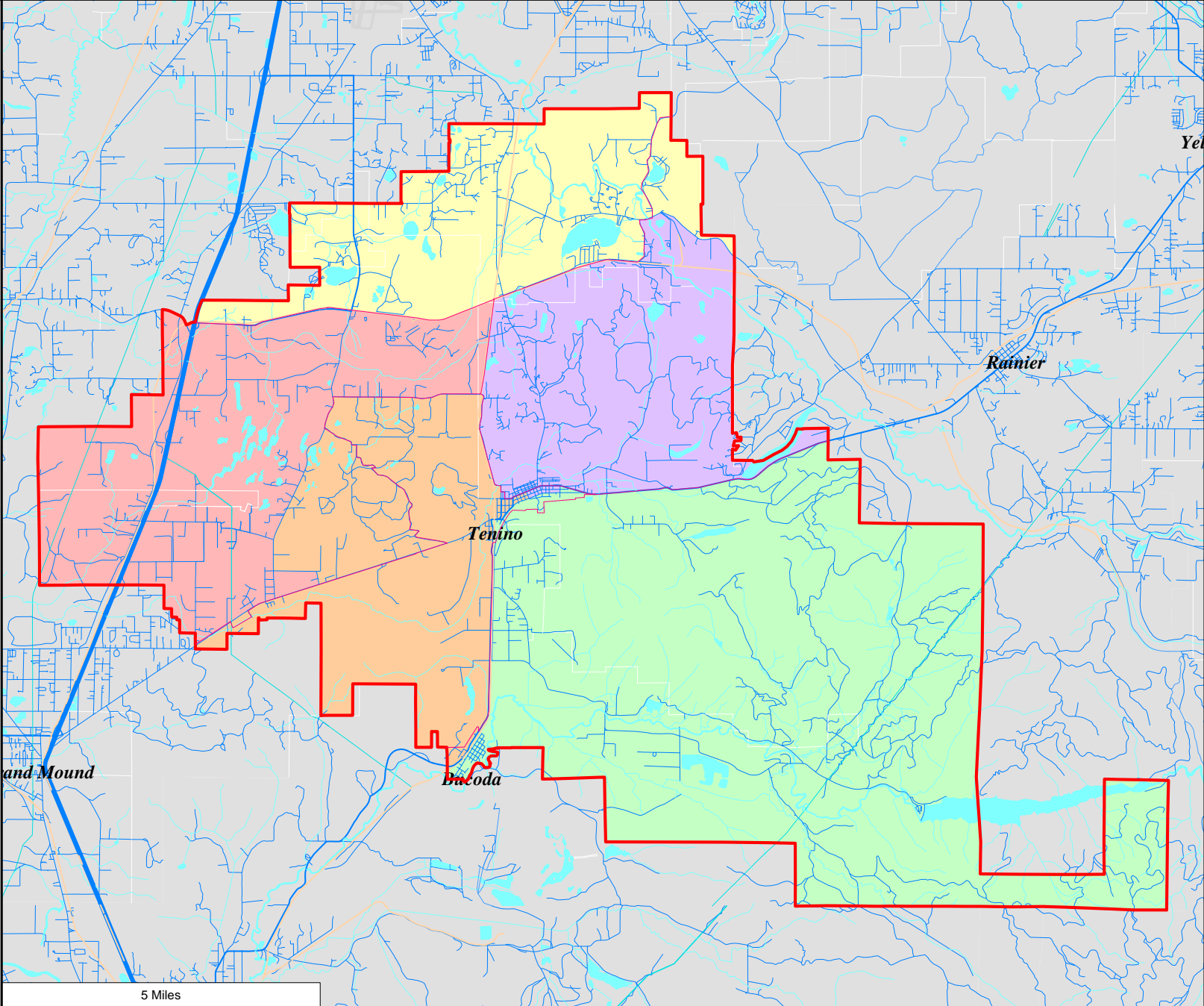
# Tenino School District

Proposed Board of Director Districts based on Census 2010 Geography

Proposed Board Districts  
as Approximated Using  
Census 2010 Geography

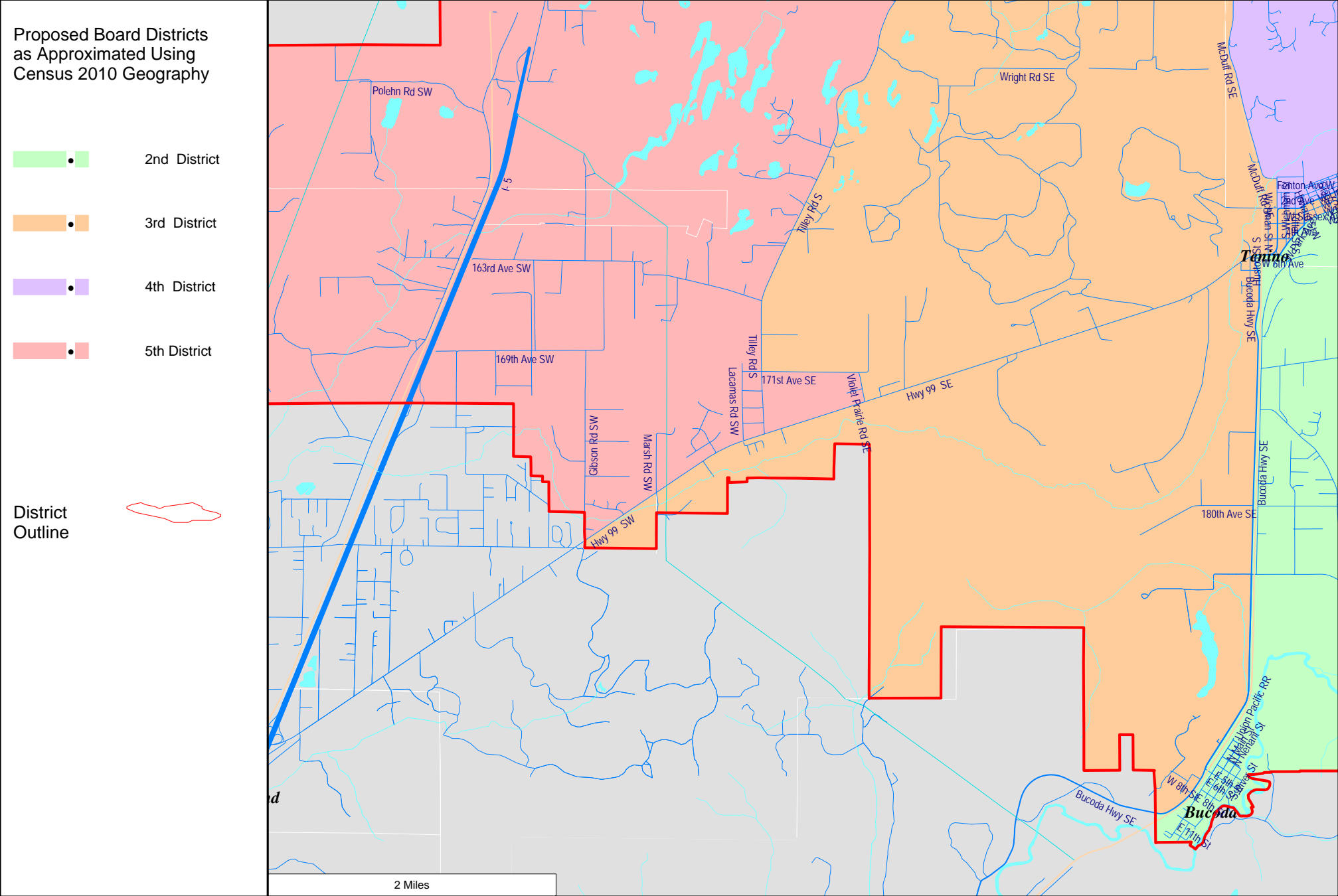
- 1st District
- 2nd District
- 3rd District
- 4th District
- 5th District

District  
Outline



# Tenino School District

## Proposed Board of Director Districts based on Census 2010 Geography



## Proposed Board of Director Districts based on Census 2010 Geography

1st District

2nd District

3rd District

4th District

5th District

